

"We cure because we care..."



"We cure because we care..."

"We cure because we care..."



5. Uroflowmetry and ultrasonography

• Uroflowmetry

Uroflowmetry gives an accurate graphic representation of urinary flow pattern. It is extremely important in the diagnosis and follow up of patients with prostatic enlargement and neurogenic bladder.

• Ultrasonography (abdominal and transrectal)

This is an essential tool in quick diagnosis of various urological problems like urinary tract obstruction, stone cancer and prostatic problems. Urological emergencies can be dealt promptly, especially at odd hours saving valuable treatment time, like PCN for obstructive uropathy patients and SPC for bladder outlet obstruction. Transrectal prostatic biopsy is essential for diagnosis of cancer of the prostate. Doppler evaluation of scrotal pathology including varicocele is also possible.

This urology centre of LIFE LINE HOSPITAL is structured to manage all the urological emergencies round the clock with laboratory and radiological back up facilities. The primary aim is to provide comprehensive urological care and to constantly upgrade facilities so as to provide the most recent treatment modalities available in the field of urology to the people of western suburbs.

Facilities Offered :

- **Cath-lab**
Angiography & Angioplasty
DSA
Pace Maker
- **Cardiac OT**
CABG (Bypass Surgery)
Valve Surgery
ASD, VSD, PDA.
- **Ortho OT**
Orthopaedic Surgery
Joint Replacement Surgery
Arthroscopy
- **Neurosurgery**
- **Bariatric Surgery**
- **Cosmetic Surgery**
- **Urology & Nephrology Dept.**
Urogenital Surgery
Lithotripsy
Dialysis
- **Endoscopy**
- **ENT Dept.**
- **Dental Dept.**
- **Ophthalmology Dept.**
- **General OT**
- **Paediatric Dept.**
- **ICCU**
- **General Ward**
- **Polyclinic**
- **EECP (Enhanced External Counter Pulsation)**
- **DEXA (Bone Densitometry)**
- **EEG / EMG / BERA**
- **ECG**
- **2D Echocardiography**
- **USG (Sonography)**
- **Computerised Stress Test**
- **Pulmonary Function Test**
- **Audiometry**
- **Digital X-ray**
- **Holter Monitoring**
- **Ambulatory BP**
- **Ventilators**
- **Computerised Pathology**
- **Arterial Blood Gas**
- **Complete Health Check-up Plan**
- **Physiotherapy**
- **Cardiac Ambulance**
- **24x7 Pharmacy**
- **Canteen Facility**



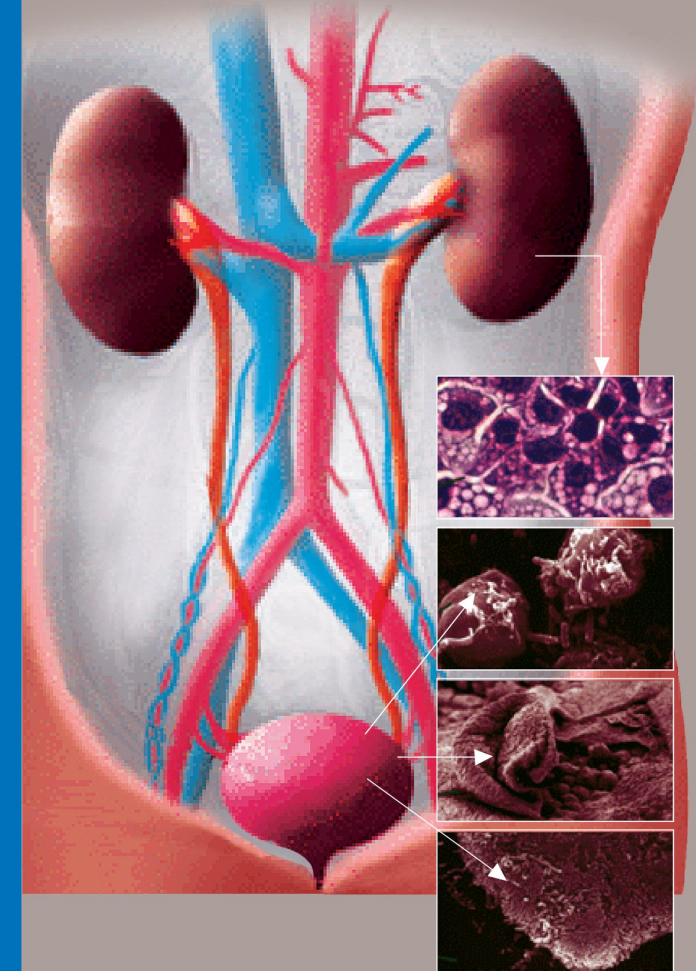
Vishal Complex, S.V. Road, Malad (W), Mumbai-400 064
Tel. : 2807 4040 / 4208 6000 Fax : 4208 6001

Sainath Road, Near Malad Subway, Off. S.V. Road, Malad (West), Mumbai-400064
Tel. : 4206 6700 / 2888 5001 / 8767076009 Fax : 4206 6701

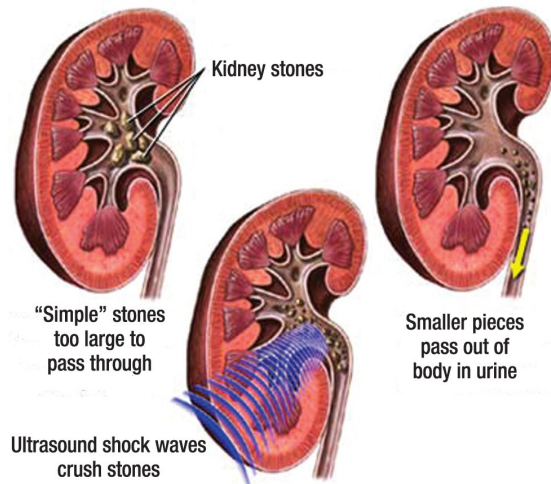
Geeta Nagar, Phase-7, Near Mira-Bhayander Flyover, Mira-Bhayander Road,
Mira Road (East), Mumbai-401105. Tel. : 2813 1125

UROLOGY

The quick information resource for patients



Tremendous technological advances have radically changed the diagnosis and treatment modalities in the recent years. Diagnostic modality like uroflowmetry, abdominal and transrectal sonography in urology clinic enables to make definitive diagnosis in the most of the cases on the initial visit itself. Keyhole minimally invasive surgeries like PCNL for kidney stones and laparoscopy surgeries have dramatically reduced the number of open surgeries in urology.



LIFELINE HOSPITAL introduces a SPECIALIZED ENDOUROLOGY AND LAPAROSCOPIC SET UP which consist of following :

1. Lithotripsy machine

A non surgical procedure for the treatment of kidney stones which uses shock waves that are generated outside the body and are focused on the stone using X-ray or ultrasound to break the stone into tiny granules which can then be easily passed through the urinary tract in the urine.

2. Dedicated 9" HF digitalized c-arm image intensifier system

- For keyhole surgeries of renal stones (PCNL) and bladder stones (PCCL).
- For diagnostic and therapeutic procedures of upper urinary tract such as PCN, RGP, PCNL, Endopylotomy and URS.

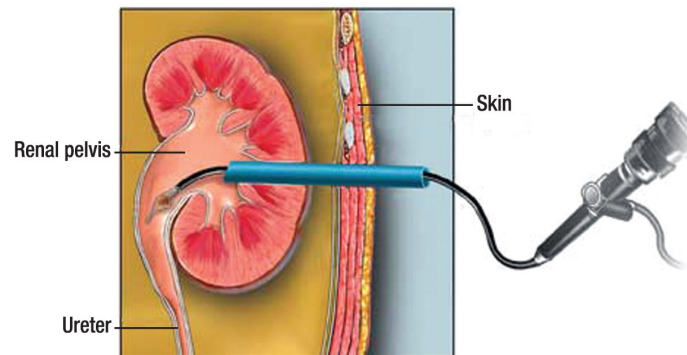
3. Well equipped operation theatre

Consisting of multiparameter monitor, defibrillator, ventilator etc. for carrying out all major endourological, laparoscopic and open urological surgeries.

4. Complete armamentarium of modern endoscopic and laparoscopic instruments

• Endovision camera

Facilitates performance of all laparoscopic surgeries and endourological procedures like TURP, TURBT, VIU, PU valve fulguration, PCNL, URS etc. with better precision and clarity. It is very useful for documentation.



• Nephroscope (PCNL)

Percutaneous Nephrolithotomy - Through a keyhole-nephroscope is passed into the kidney and a large stone is broken with lithotripsy and removed.

• Ureteroscope - URS

Ureteroscope is passed into the ureter per urethra and ureteric stone is broken and removed. Ureteric strictures and tumours can also be treated

